

1001-B PRECISION GARDEN SEEDER *EarthWay* ASSEMBLY and OPERATING INSTRUCTIONS *Garden*

Congratulations on the purchase of this new EarthWay Garden Seeder. Please contact us if you have any difficulty with assembly or operation of this product. We can be reached via the telephone at 800-294-0671 or 574-848-7491 Monday - Friday 9:00am ~ 4:00pm or visit us online at www.earthway.com The 1001-B comes with lifetime technical support, email us at techsupport@earthway.com.

HELPFUL HINTS: READ THE DIRECTIONS BEFORE ASSEMBLY

- ☑ THIS SEEDER COMES PARTIALLY ASSEMBLED, REQUIRING YOU TO INSTALL THE WHEELS, HANDLE ASSEMBLY, AND ROW MARKER.
- ☑ IT SHOULD TAKE APPROXIMATELY 15 MINUTES WITH BASIC HAND TOOLS.
- ☑ CLEAN AND DRY YOUR SEEDER THOROUGHLY AFTER EACH USE.

PRECISION GARDEN SEEDER ~ Assembly

Model 1001-B (Refer to Figure 1, Page 3 for illustration)

REAR WHEEL

1. Lower kick stand at front to hold planter upright.
2. Remove nut, bolt, and axle (22, 18, & 25) from frame.
3. Insert axle through rear wheel (17), place between frame, and line up with holes in end of frame.
4. Reinstall bolt and nut (18 & 22), and tighten.

HANDLE

1. Remove nuts and bolts from Plastic Bag. (These are special lock nuts. A wrench will be required to turn them).
2. Bolt handle (8) in place using bolt & nut (13 & 14) as shown in Figure 1, Page 3 for illustration.
3. Install the Row Marker Retainer Clip (10) from the front to the back and press into place in the holes on the handle.

ROW MARKER

1. Place row marker shaft (1) in front of row marker bracket and line up holes.
2. Insert clevis pin (7) through row marker shaft (1) and row marker bracket, and insert hair pin clip (6) through clevis pin. When not in use, secure the row marker shaft to the New Row Marker Retainer Clip (10) to hold in place.
3. A cord may be tied to the handle bracket (24) and row marker shaft (1) for lowering and raising the row marker.



1001-B PRECISION GARDEN SEEDER

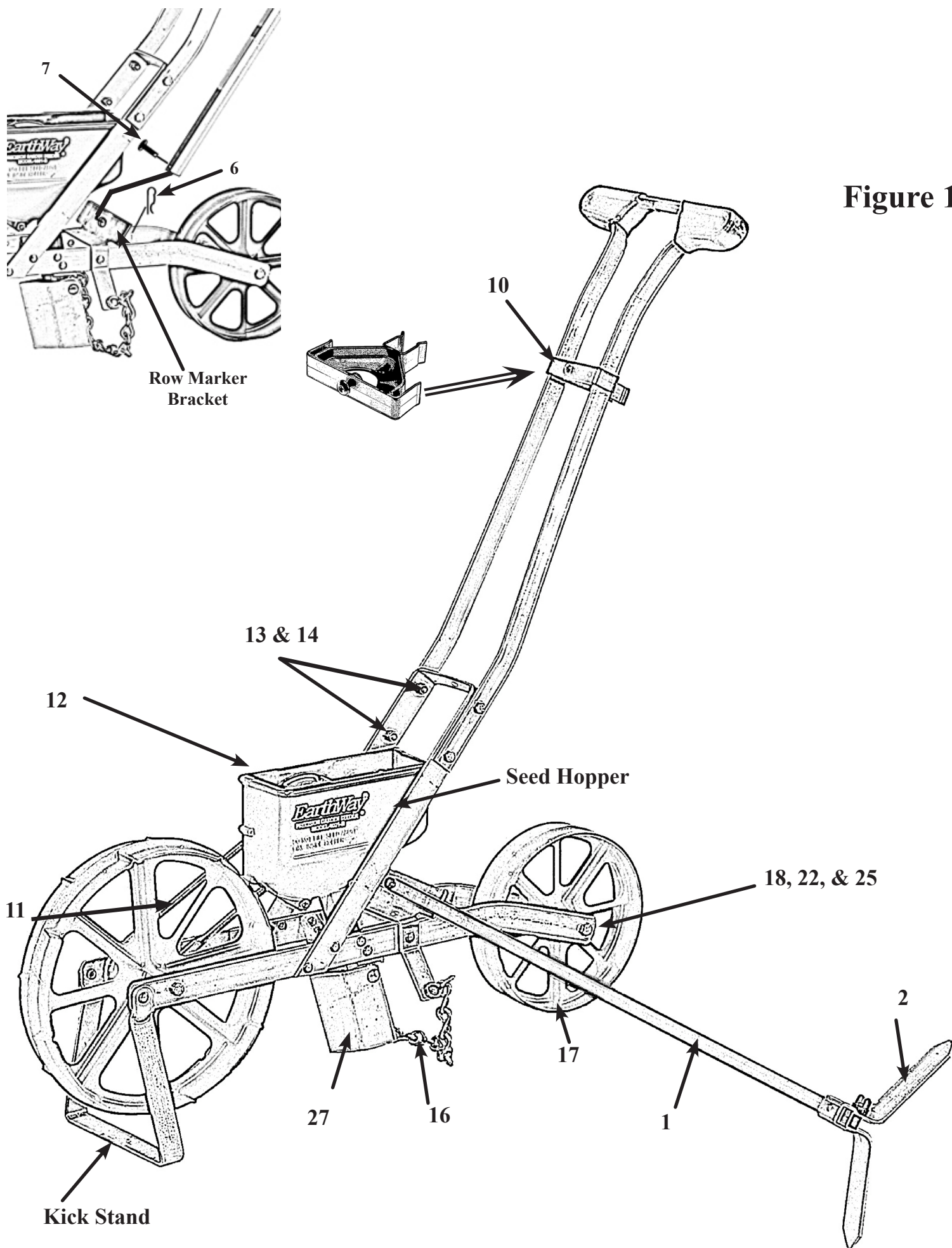
OPERATION (Refer to Figure 1, Page 3 for illustration)

1. You will find one seed plate in place in the hopper, the rest in the box. **A.** To remove the plate, hold pulley (12) and belt (11) stationary with one hand and rotate the seed plate approximately 1/2" in the "OFF" direction as indicated by an arrow on the seed plate. **B.** Push the seed plate off the hub through the hole just above the pulley. It will slip off easily.
2. To select the desired seed plate, see the **SEED PLATE CHART** on page 4. If you wish to plant a seed that is not listed on the chart, it may be possible to plant with one of these plates if the seed is of similar size and shape as those listed. It is best to experiment before planting. If more distance is desired between seeds, place a piece of masking tape over, or fill with bees wax every other hole or as required in the seed plate.
3. To install the desired seed plate, hold the seed plate at an angle with the bottom against the straight wall in the seed hopper. Line up the slots against the inside of the seed hopper and rotate it approximately 1/2" in the "ON" direction as indicated by the arrow on top of the hopper until the cam action locks the seed plate in place on the hub. Do not force. OFF or ON directions are also indicated on the seed plates.
4. Pour seeds in the seed hopper. **CAUTION:** Do not fill the hopper above the center of the seed plate.
NOTE: All the seed, especially small seed, will not be picked up by the plates leaving a small amount in the bottom of the hopper. Tilt the seeder to the right as you move down the row to help remove most of the seed if required.
5. Next set the planting depth with the wedge-shaped ground opener (27) located directly under the hopper. Note that there are graduations in both inches and millimeters on the front angles of the seed chute. Move ground opener until top edge is in line with desired planting depth. Retighten wing nut after adjustment is made. Check the depth by moving the seeder forward a few inches.
6. Mark out the first row with string and stakes. Lower the row marker shaft and adjust the row marker to the proper width for the next row. Lift the kick stand over the Front wheel. Be sure the cover chain (16) follows behind the ground opener. You are now ready to plant.
7. To empty any remaining seeds, lower the kick stand and tip the seeder forward until all seeds are removed.
NOTE: When changing seed plates, be sure the seed hopper is completely empty.

NOTICE: Keep your seed hopper clean and free from dust, sand, dirt and seed treating materials.

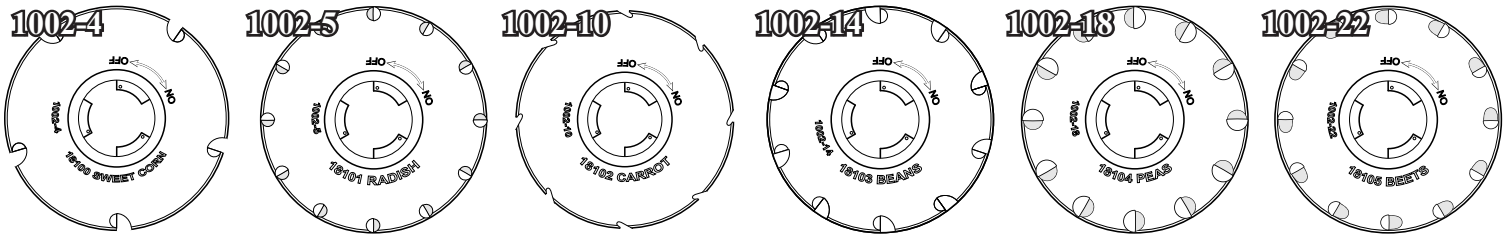
MAINTENANCE (Refer to Figure 1, Page 3 for illustration)

1. Any accumulation of dust, dirt, or residue from chemically treated seeds in the seed hopper should be wiped out with a cloth after each use. A build up of dirt may cause the seed plate to stick and seeds to pop out.
2. Under certain conditions static electricity may build up on the seed hopper and interfere with planting fine seeds. If this situation should occur, wash the seed hopper and the seed plate with a mild dish washing detergent, and allow to dry.



STANDARD SEED PLATES

Pt. #60009

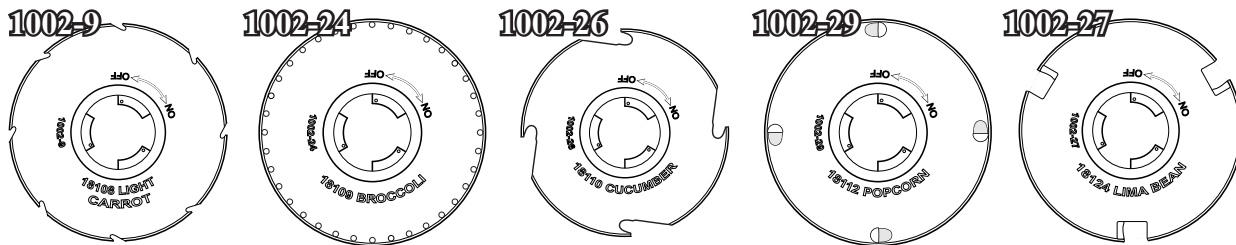


18100 Sweet Corn	18101 Radish	18102 Carrot	18103 Beans	18104 Peas	18105 Beet
7.2" Spacing / 18.3 cm	3" Spacing / 7.6 cm	4.5" Spacing / 11.4 cm	3.6" Spacing / 9.1 cm	3" Spacing / 7.6 cm	3.6" Spacing / 9.1 cm
Will plant most varieties of sweet corn as well as some other larger seed types.	Will plant some leek, asparagus, spinach and other fine seeds	Will plant some lettuce, turnip, endive, cabbage, onions, tomatoes, and other fine seeds	Will plant some small peas	Will plant some Jumbo and Early June Peas	Will plant some Okra, Swiss Chard, and other medium seeds

TIP: You can adjust the spacing of the seeds by covering one or more holes in the seed plate with bees wax.

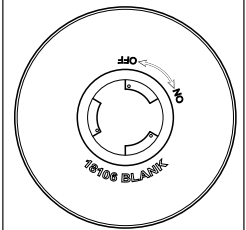
OPTIONAL SEED PLATES

Pt. #60010



18108 Light Carrot	18109 Broccoli	18110 Cucumber	18112 Popcorn	18124 Lima Bean
4.5" Spacing / 11.4 cm	1" Spacing / 2.5 cm	9" Spacing / 22.9 cm	9" Spacing / 22.9 cm	12" Spacing / 30.5 cm
Will plant light lettuce, turnip, rutabaga, light cabbage, mustard, kale, and other fine seeds	Will plant mustard, cabbage, cauliflower, turnip, rutabaga, and other fine seeds	Will plant some pumpkin, gourds, squash, and other flat seeds	Will plant medium sized seeds of a size less than 0.25" or 6.3 mm in diameter	Will plant peanuts and other large seeds

NOT INCLUDED IN #60010



18106 BLANK PLATE

The blank seed plate allows you to make a custom seed plate with spacing and seed size that you determine.

**NOT INCLUDED IN
OPTIONAL SET**

SEED PLATE TIP - If you have problems with small seeds getting behind the seed plate, dip the seed plate in soapy water then let air dry. This should solve your problem.

1500 SIDE-DRESS FERTILIZER ATTACHMENT ~ OPTIONAL

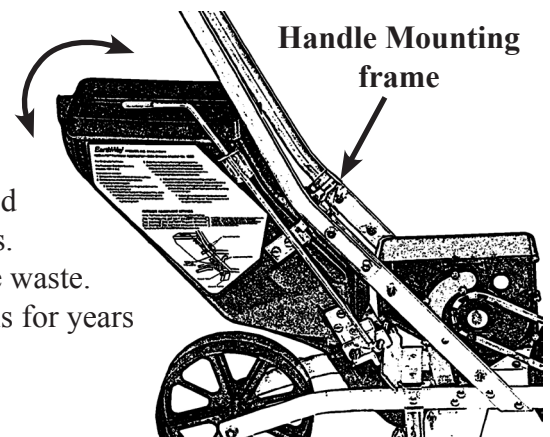
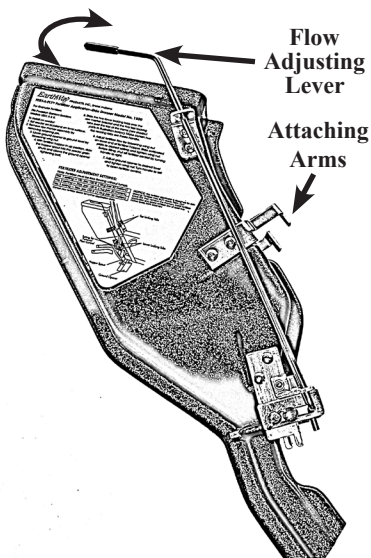
CANNOT BE USED WITH ROW MARKER IN PLACE.

Attaching

Remove Row Marker assembly (5) by removing Hair Pin Clip (6) and Clevis Pin (7). Slide the 1500 between the handle and lock the Attaching Arms over the Handle Mounting frame.

Operating Instructions

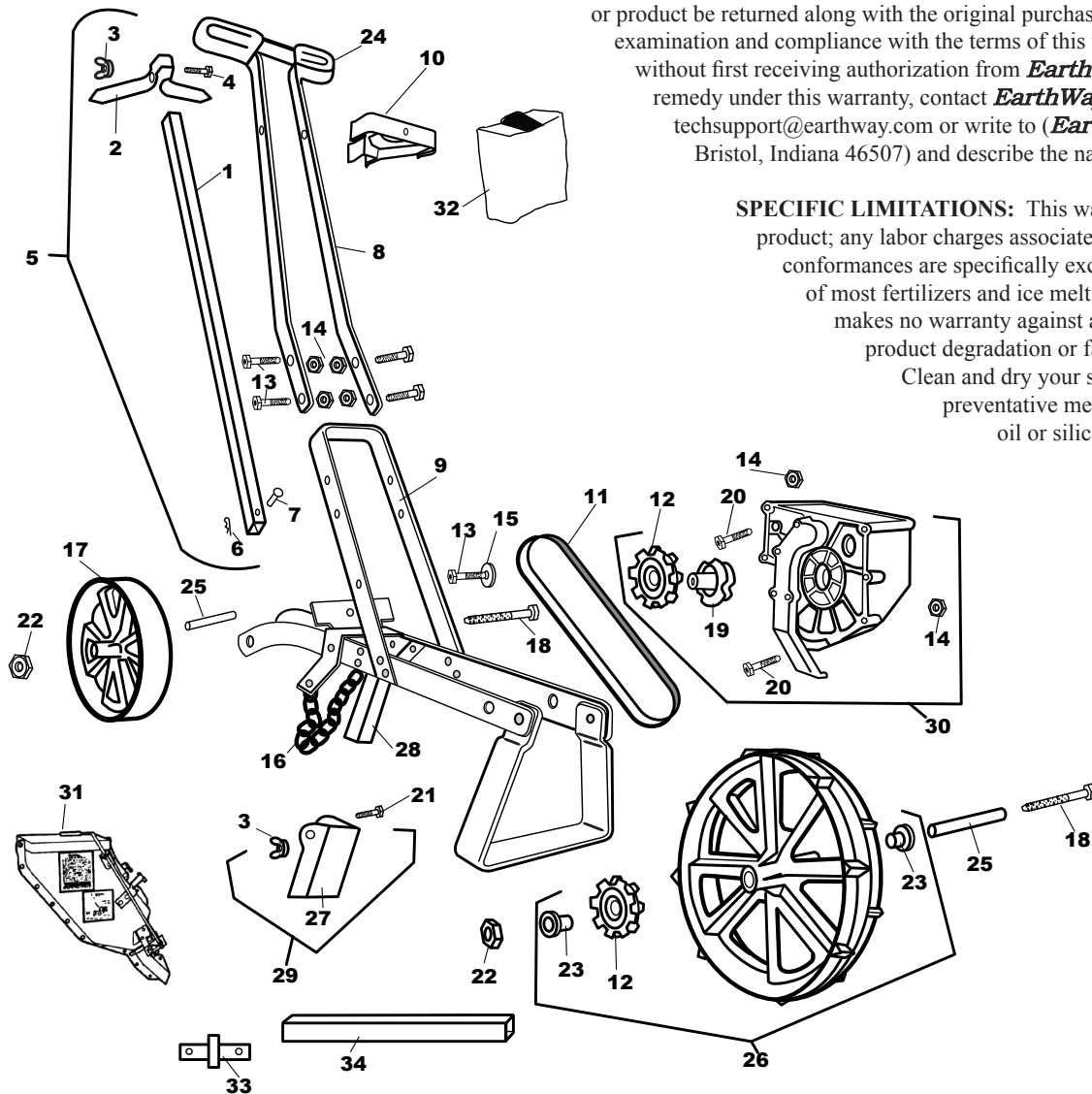
Rotate Flow Adjusting lever to vary the application rate of the fertilizer. Calibrated slide plate allows precise flow rates of all granulated fertilizers. Fertilizer can be applied above or below ground to depth of two inches. Positive action On/Off handle helps eliminate waste. Made from durable weather resistant materials for years of dependable use.



5-YEAR LIMITED WARRANTY

EarthWay Products, Inc. warrants this product free of defects in original workmanship and materials for a period of 5-Years to the end user with the original dated purchase receipt. If a manufacturing non-conformance is found, **EarthWay** Products, Inc. at its discretion will repair or replace the part(s) or product at no charge provided the failure is not the result of incorrect installation, mishandling, misuse, tampering, or normal wear and tear as determined by **EarthWay**. **EarthWay** at its discretion may require that the part(s) or product be returned along with the original purchase receipt at owners' expense for examination and compliance with the terms of this warranty. (Do not return any product without first receiving authorization from **EarthWay** Products, Inc.). To seek remedy under this warranty, contact **EarthWay** Products, Inc. at 574-848-7491, techsupport@earthway.com or write to (**EarthWay** Products, Inc. P.O. Box 547 Bristol, Indiana 46507) and describe the nature of the manufacturing defect.

SPECIFIC LIMITATIONS: This warranty covers only the part(s) or product; any labor charges associated with repair or replacement of non-conformances are specifically excluded. Due to the corrosive nature of most fertilizers and ice melt products, **EarthWay** Products, Inc. makes no warranty against and specifically excludes part(s) or product degradation or failure due to corrosion or its effects. Clean and dry your seeder thoroughly after each use, as a preventative measure, coat all metal parts with a light oil or silicon spray.



EarthWay Products,
Inc.
P.O. Box 547
Bristol, IN 46507
Phone: 800-294-0671
www.EarthWay.com

1001-B Parts List

Key	Part	Description	Key	Part	Description	Key	Part	Description
1	22606	Row Marker Shaft - 30"	18	31102	5/16-18 X 4 1/2" Hex Bolt	18103		Bean Seed Plate
2	41228	Row Marker	19	12130	Hub	18104		Pea Seed Plate
3	60027	1/4-20 Wing Nut	20	31100	1/4-20 X 1 1/2" Hex Bolt	18105		Beet Seed Plate
4	37100	1/4-20 X 1" Carriage Bolt	21	37101	1/4-20 X 1 1/2" Carriage Bolt	60010		OPTIONAL Set of 5 OPTIONAL Seed Plates
5	60012	Row Marker Assembly	22	32102	5/16-18 Hex Nut	18108		OPTIONAL Light Carrot Seed Plate
6	33100	Hair Pin Clip	23	12132	Wheel Bearing	18109		OPTIONAL Broccoli Seed Plate
7	12133	Clevis Pin	24	19110	Handle Grip	18110		OPTIONAL Cucumber Seed Plate
8	60011	Handle Assembly, includes #24	25	23500	Axle	18112		OPTIONAL Popcorn Seed Plate
9	60013	Frame, includes #16 & 28	26	12102	Front Wheel Assembly, includes #12 & 23(2)	18124		OPTIONAL Lima Bean Seed Plate
10	12105	Row Marker Retainer Clip	27	48300	Ground Opener	18107		OPTIONAL Custom Seed Plate - Call Customer Service for Details (phone 574-848-7491)
11	19109	Belt	28	48301	Seed Chute Assembly, includes #13 & 14			
12	12131	Pulley	29	60015	Ground Opener Kit, includes #3, 21 & 27	18106		OPTIONAL Blank Seed Plate
13	31101	1/4-20 X 3/4" Hex Bolt	30	60017	Hopper Assembly	31	1500	OPTIONAL Fert-A-Ply Fertilizer Applicator
14	32103	1/4-20 Lock Nut		60009	Set of 6 Standard Seed Plates	32	1100-A	OPTIONAL Seed Plate Storage Case Kit
15	12353	Back Plate Washer	18100		Sweet Corn Seed Plate	33	12106	OPTIONAL Adapter for #22610
16	70104	Cover Chain	18101		Radish Seed Plate	34	22610	OPTIONAL 12" Row Marker Extension
17	12101	Rear Wheel	18102		Carrot Seed Plate			